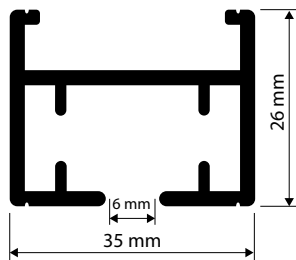


Motor-operated rail 9500

Aluminium rails

System 9500



PRODUCT FEATURES

- Sturdy rail for motor / chain operation for living areas and public areas
- Ceiling fixation with quick-lock
- Low-noise electric drive
- 230 V drive (motor power selectable between 30 W or 45 W, also available as tandem version for heavy curtains or installations bigger than 7 m)
- 24 V drive with TCS (Touch Control System, automatic shifting of the curtain in "manual operation" prevents damage to the system)
- Chain operation max. 6 m
- Track width 6 mm
- Bearing length 7 m

AVAILABLE COLOURS

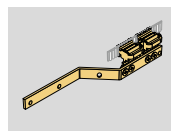
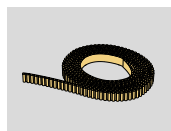
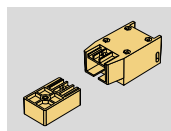
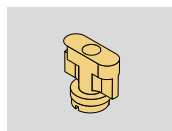


White (RAL 9016)



Silver (anodized)

STANDARD COMPONENTS

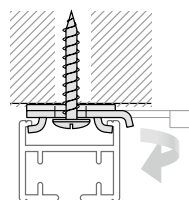


For the exact designation of standard components and gliders and for more gliders refer to **Accessories**.

SELECTABLE GLIDERS



ASSEMBLY OPTIONS



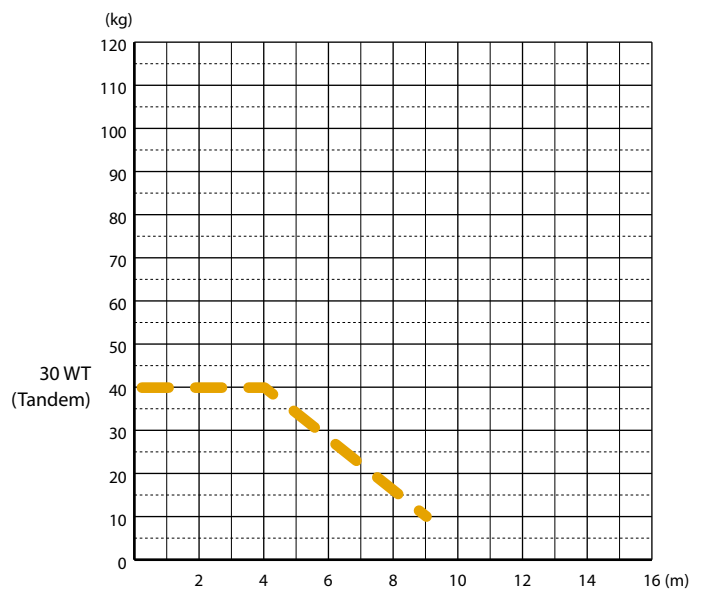
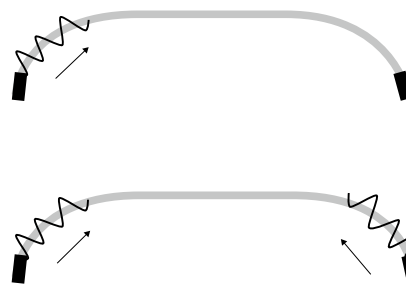
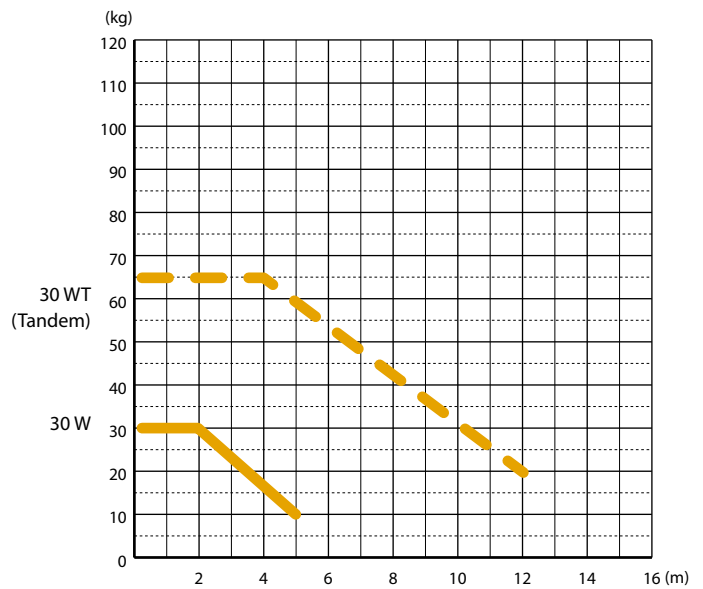
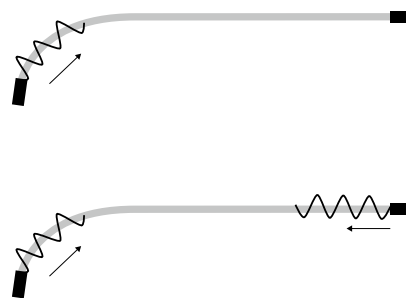
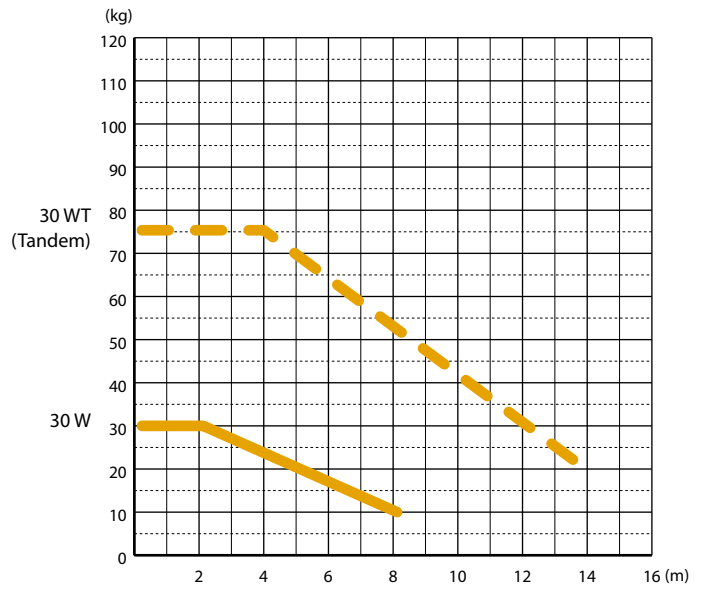
CURVE



Horizontal curve

Possible radii: **From 45 cm any radius possible**

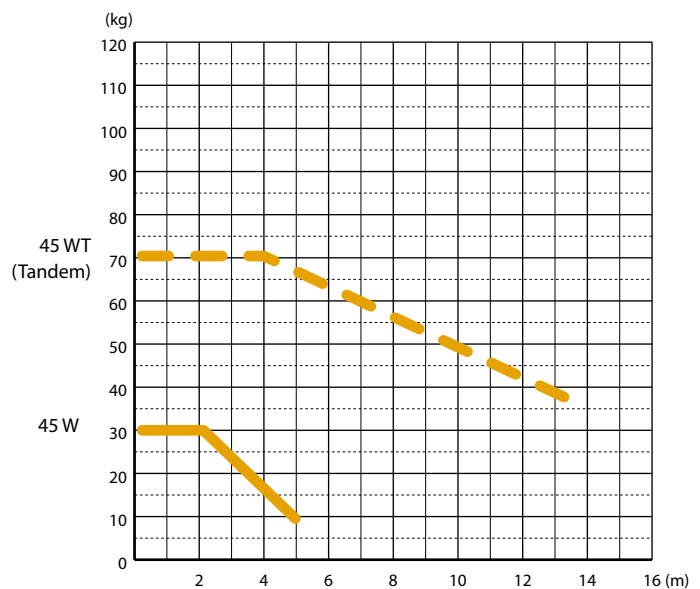
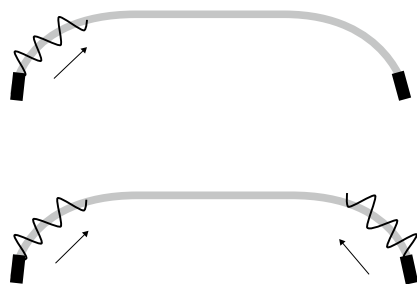
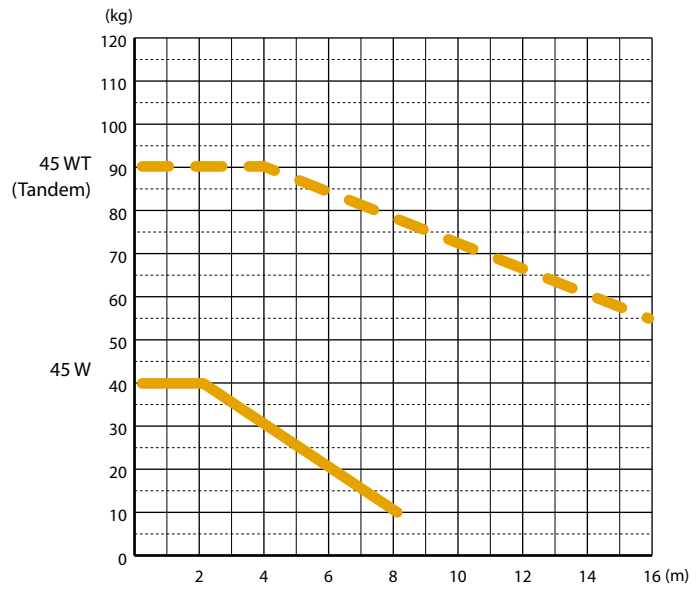
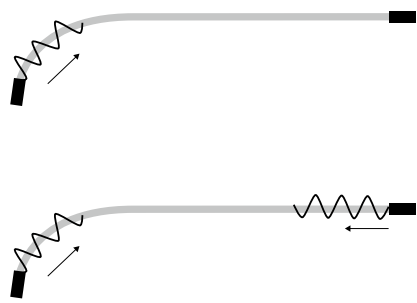
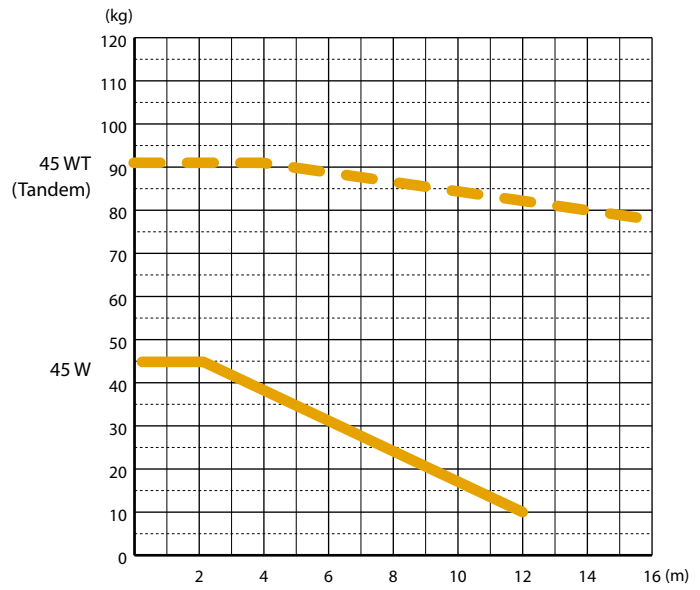
LOAD TABLES 30 W/30 WT (TANDEM)



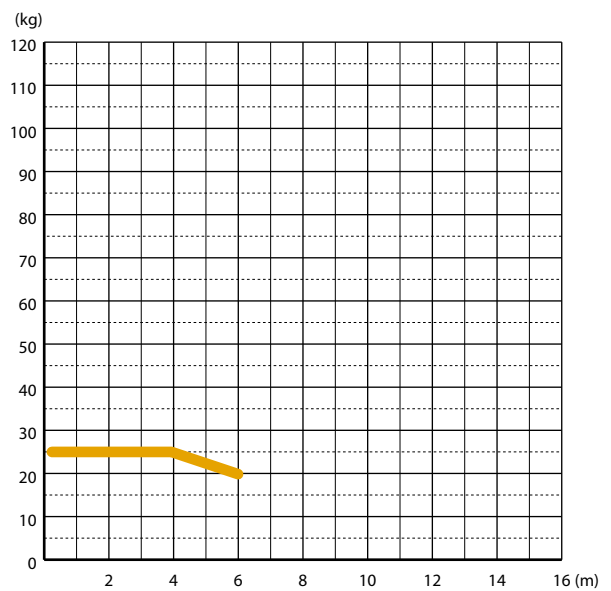
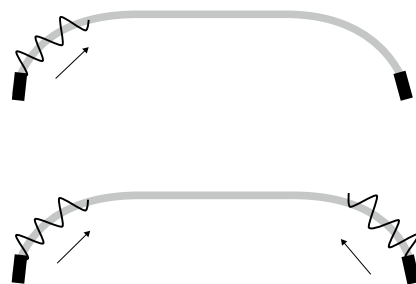
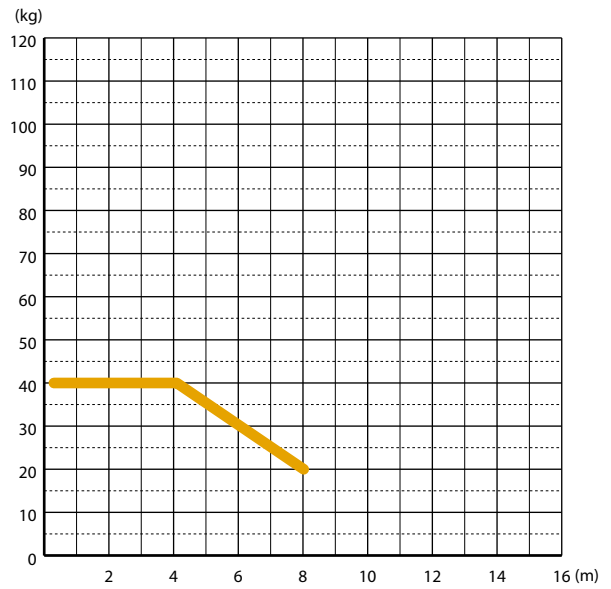
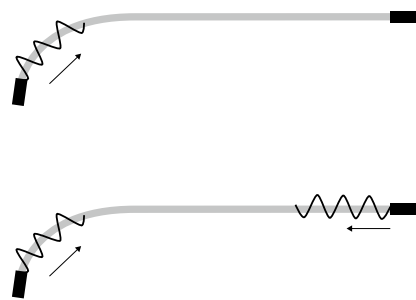
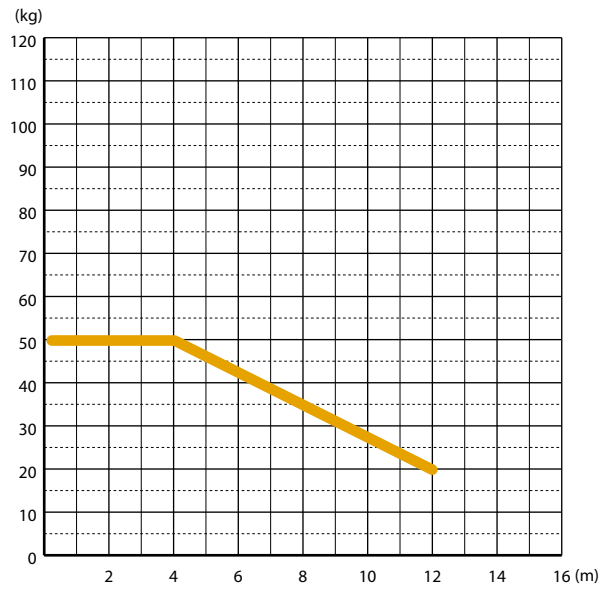
Motor-operated rail 9500

Aluminium rails

LOAD TABLES 45 W/45 WT (TANDEM)



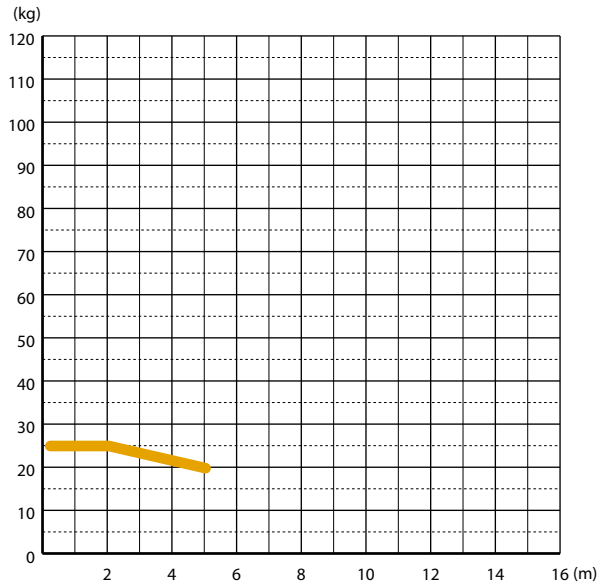
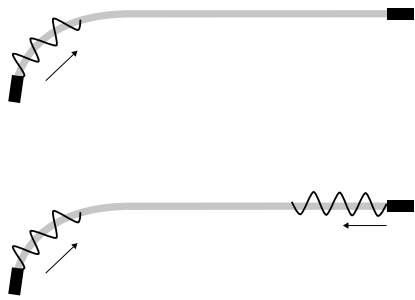
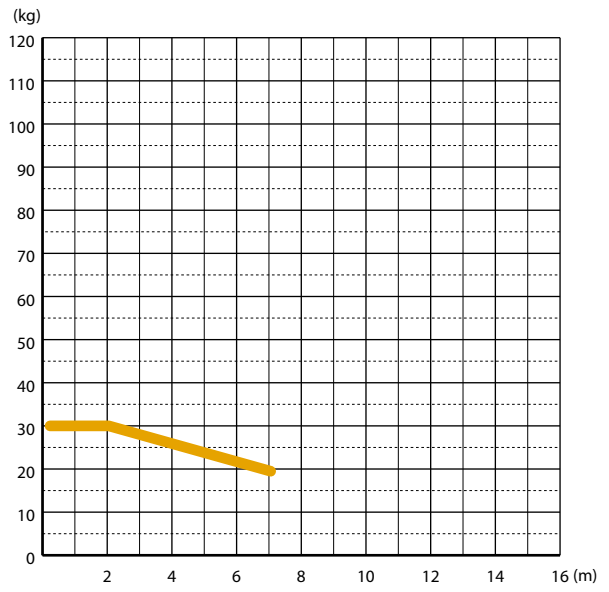
LOAD TABLES 24 V



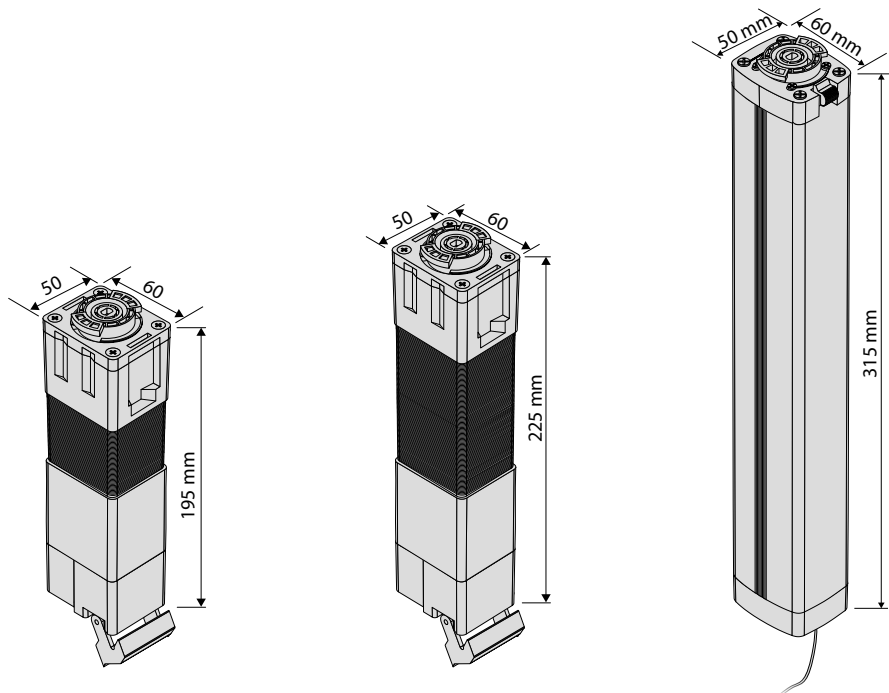
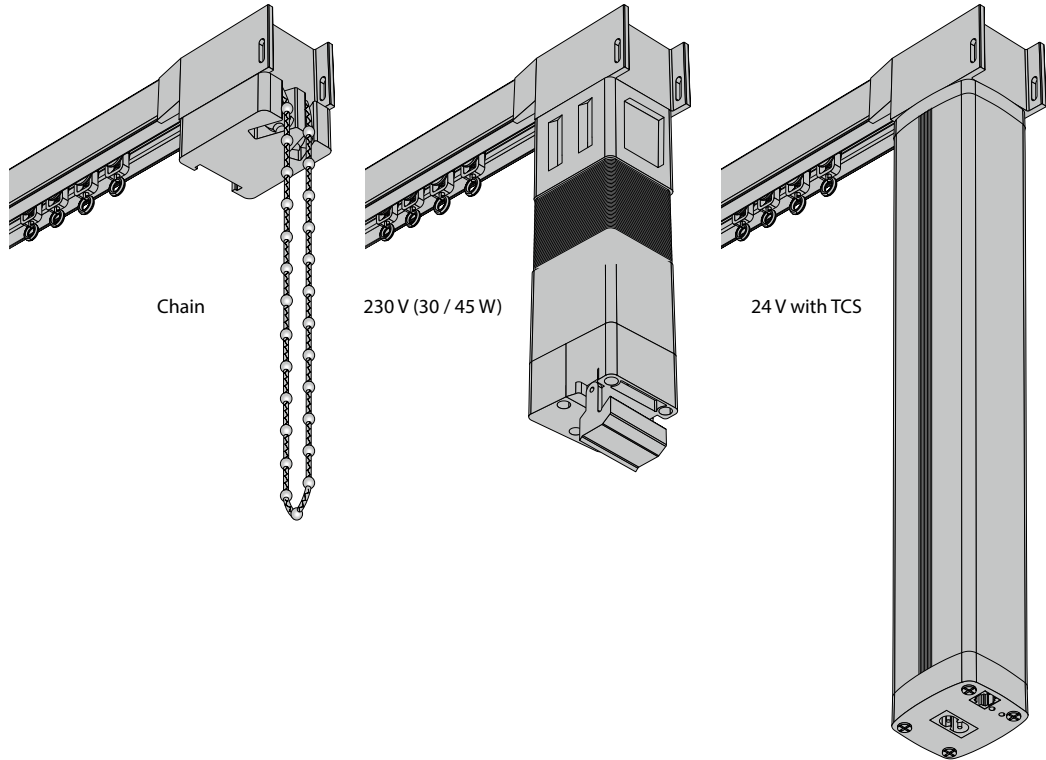
Motor-operated rail 9500

Aluminium rails

LOAD TABLES - CHAIN



LIST OF MOTORS / TECHNICAL DATA

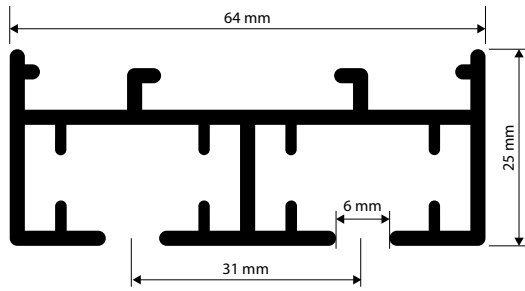


	Motor 30 W	Motor 45 W	Motor 24 V – Fully automatic operation
Power supply	230 V	230 V	230 V
Nominal capacity	30 W	45 W	15 W
Nominal current	0,13 A	0,195 A	0,8 A
Frequency	50 Hz	50 Hz	50 Hz
Operating mode	S3 30%	S3 30%	S3 50%
Type of protection	IP 41	IP 41	IP 41
Rotational direction	right + left	right + left	right + left
Speed	5,6 m/min.	5,6 m/min.	9,6 m/min.
Tandem available	yes	yes	no
TCS (Touch-Control-System)	no	no	yes

Motor-operated rail 9550

Aluminium rails

System 9550



PRODUCT FEATURES

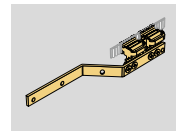
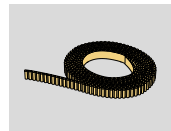
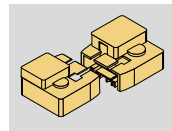
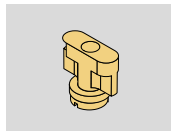
- Sturdy rail for motor / chain operation for living areas and public areas
- Ceiling fixation with quick-lock
- Low-noise electric drive
- 230 V drive (motor power selectable between 30 W or 45 W, also available as tandem version for heavy curtains or installations bigger than 7 m)
- Chain operation max. 6 m
- Track width 6 mm
- Bearing length 7 m

AVAILABLE COLOURS



White (RAL 9016)

STANDARD COMPONENTS

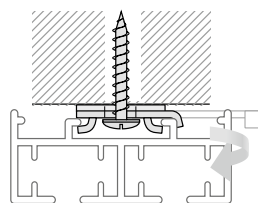


For the exact designation of standard components and gliders and for more gliders refer to **Accessories**.

SELECTABLE GLIDERS



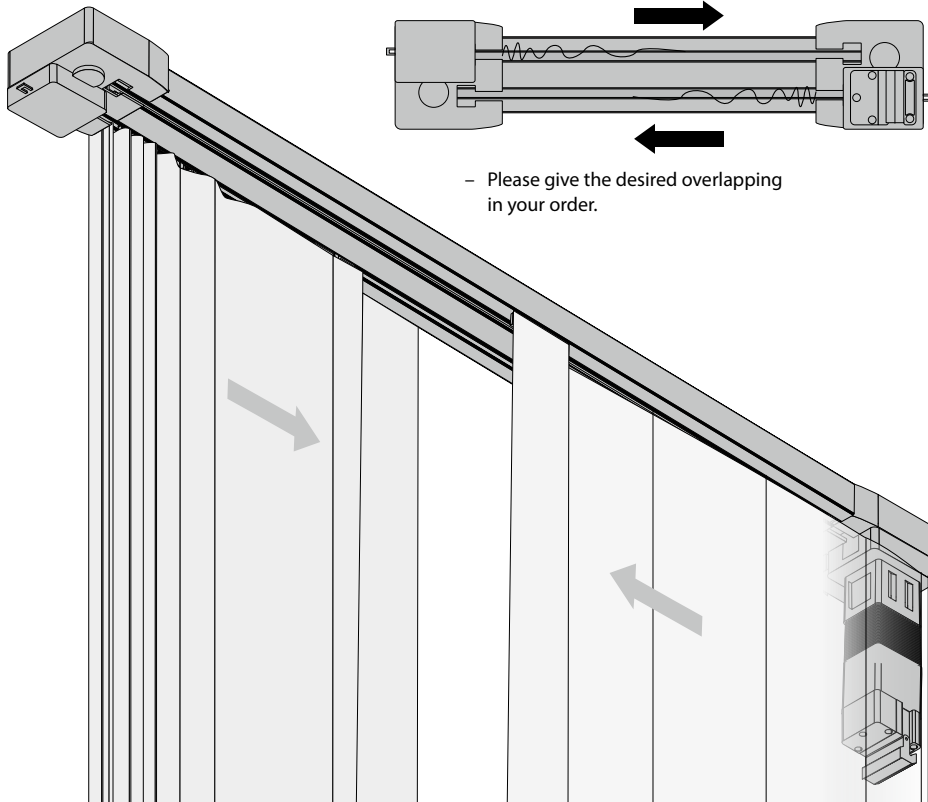
ASSEMBLY OPTIONS



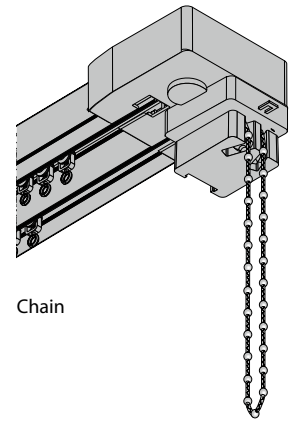
Motor-operated rail 9550

Aluminium rails

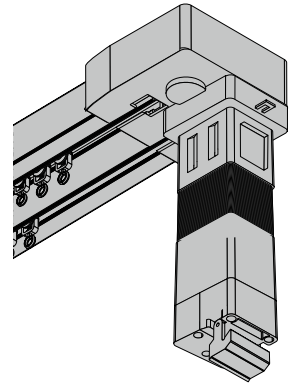
1 DRIVE



- Please give the desired overlapping in your order.



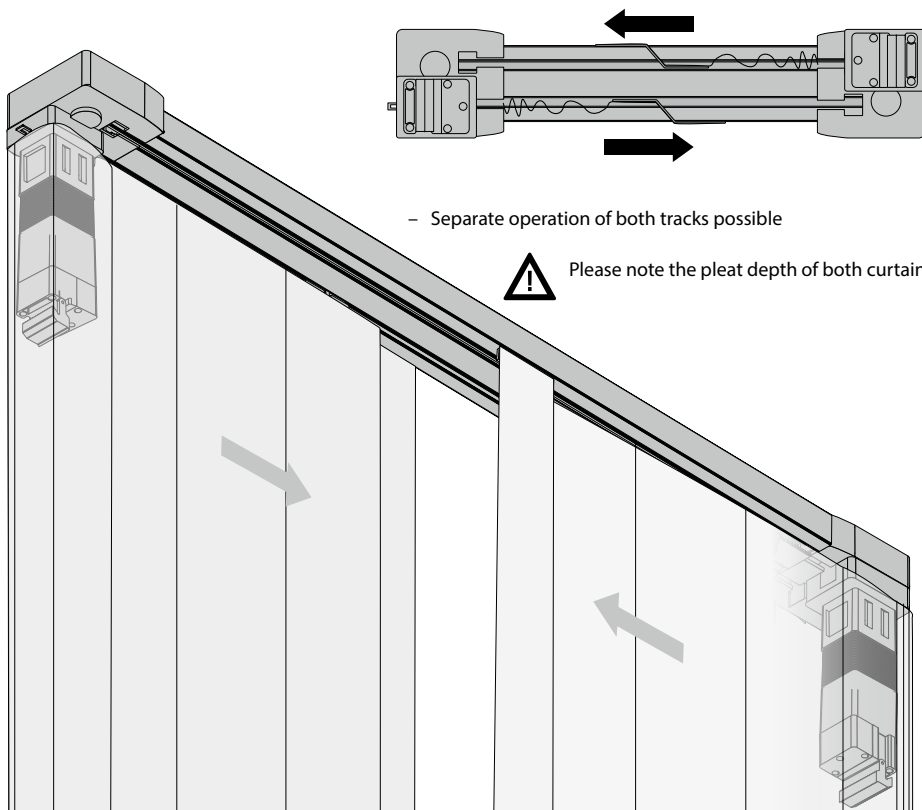
Chain



230 V (30 / 45 W)

- Mounting of several 1-track installations is not required
- Central overlapping freely selectable

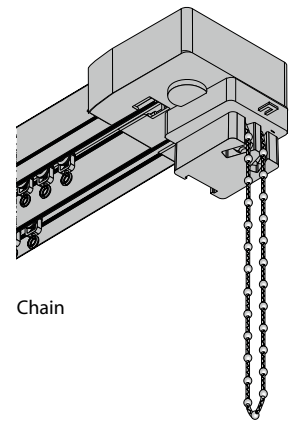
2 DRIVES



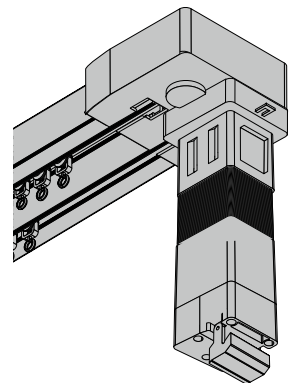
- Separate operation of both tracks possible



Please note the pleat depth of both curtains



Chain



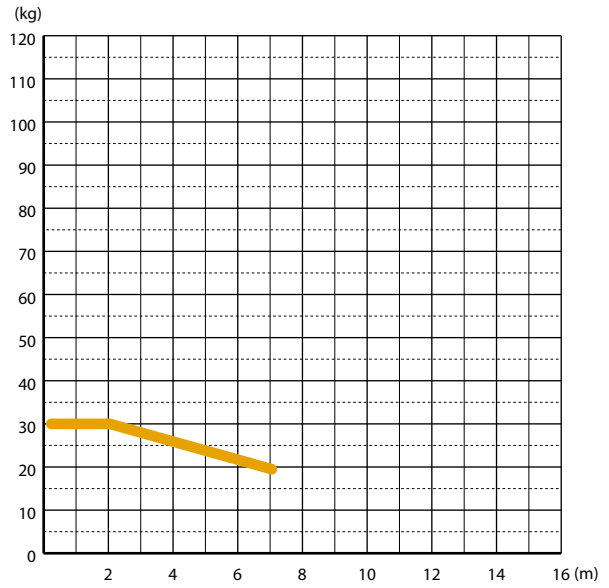
230 V (30 / 45 W)

- Separate and independent operation of both tracks possible
- Combinations of the different operation variants are possible, e.g. 1-track chain, 2-track motor

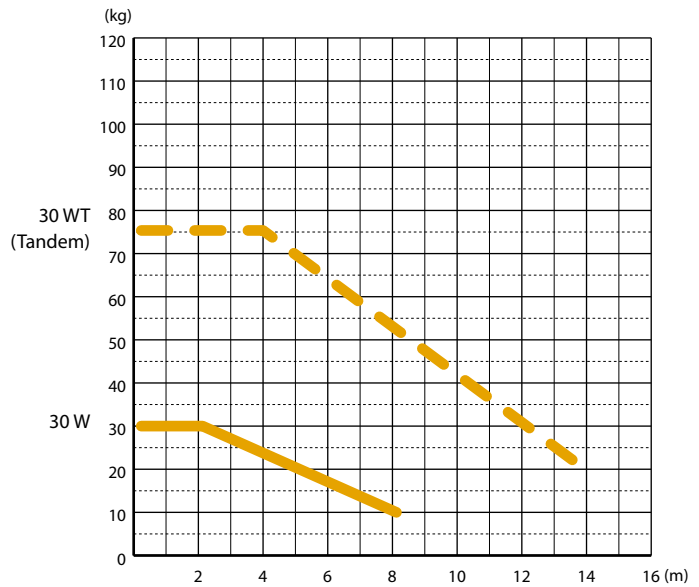
Motor-operated rail 9550

Aluminium rails

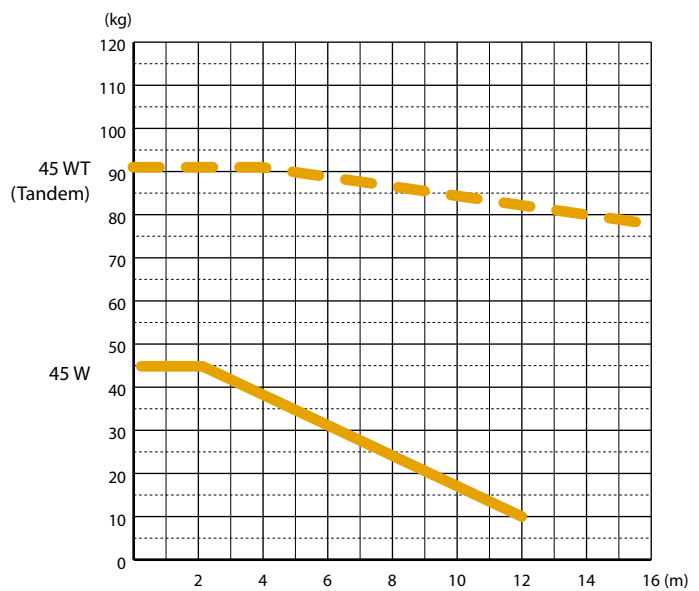
LOAD TABLES - CHAIN



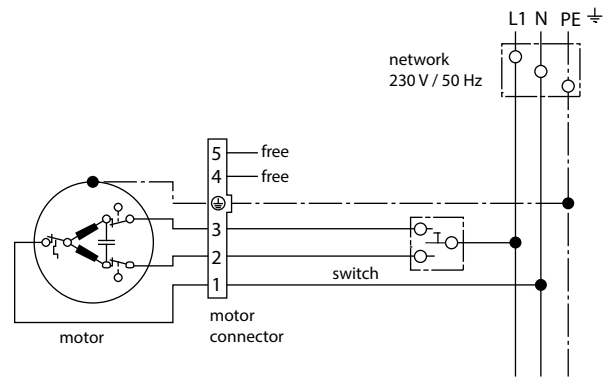
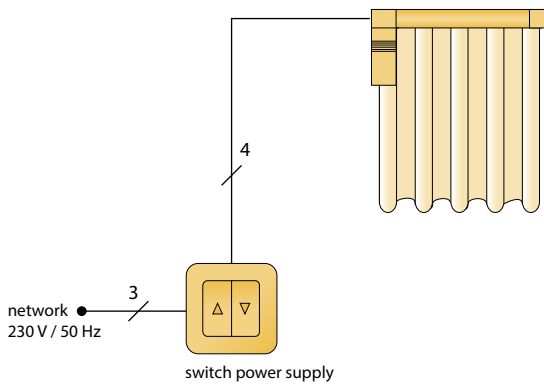
LOAD TABLES 30 W/30 WT (TANDEM)



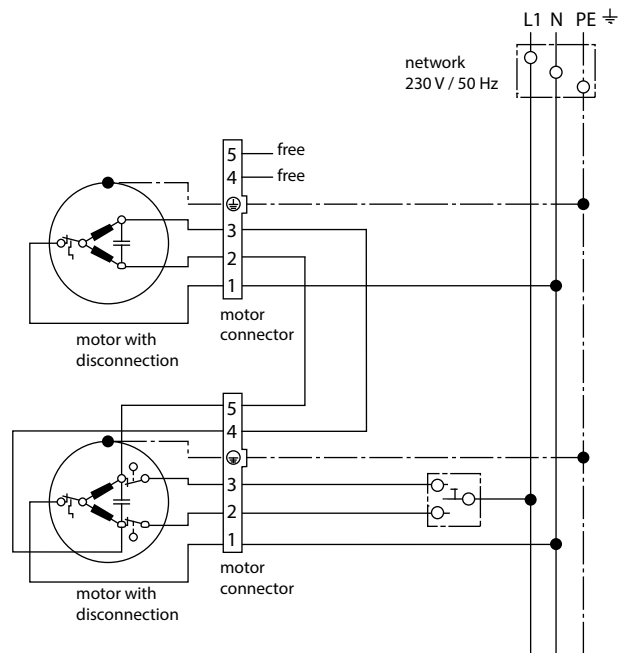
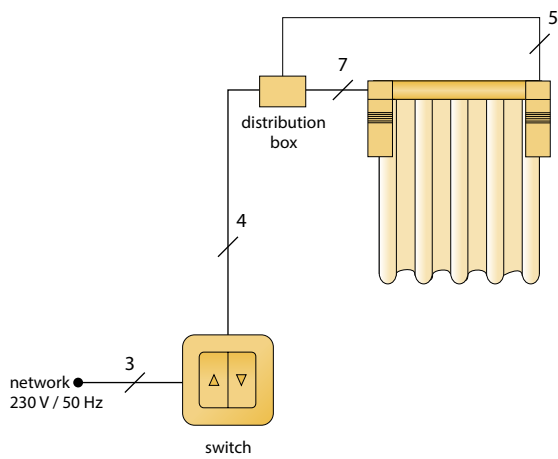
LOAD TABLES 45 W/45 WT (TANDEM)



SINGLE OPERATION WITH SWITCH MOTOR 230 V



SINGLE OPERATION WITH TANDEM MOTORS 230 V

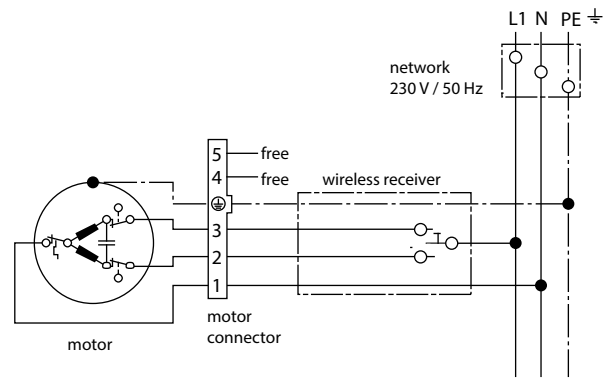
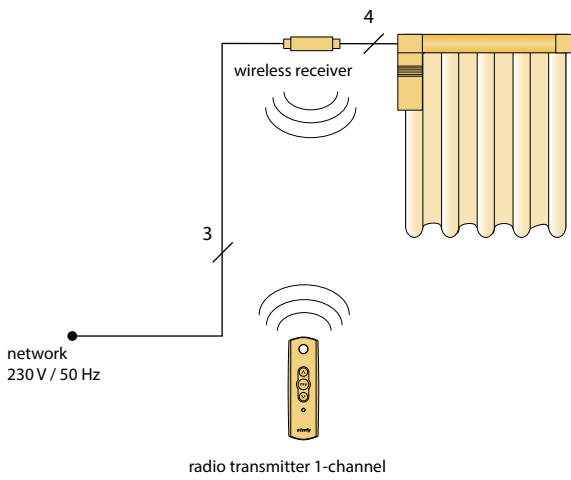


Other circuit diagrams available on request.

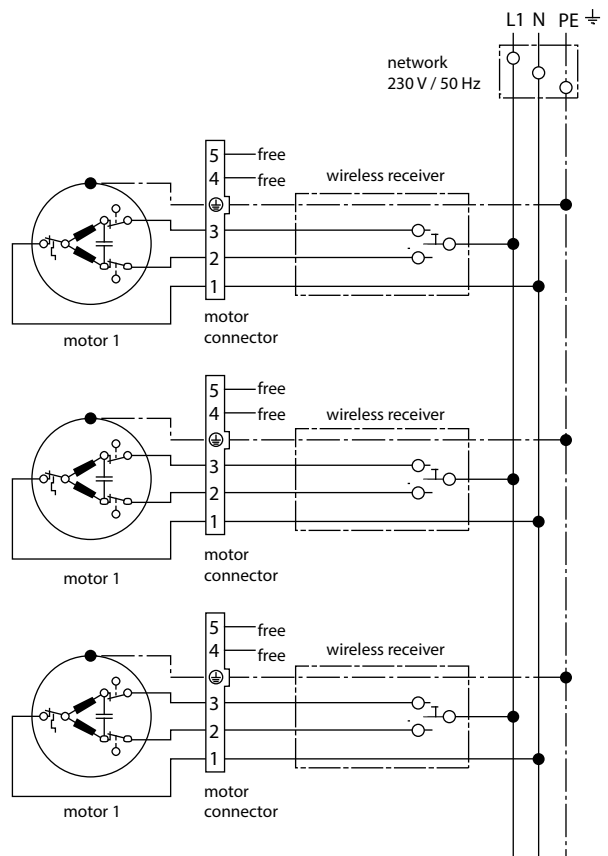
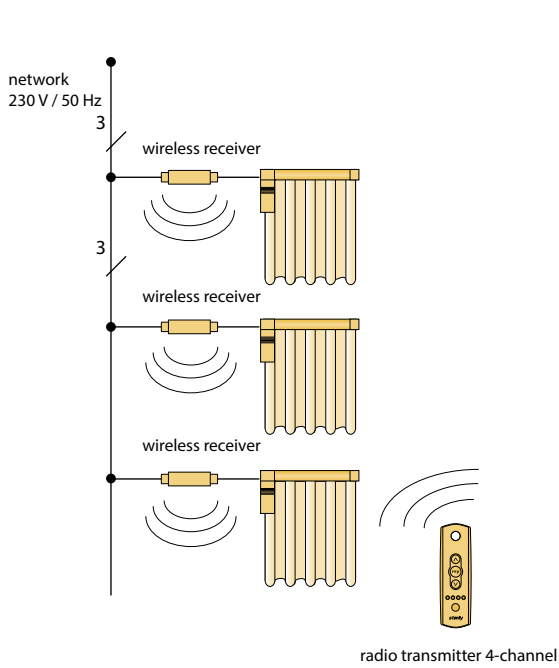
Motor-operated rail 9500/9550

Aluminium rails

SINGLE REMOTE CONTROL MOTOR 230 V WITH SOMFY WIRELESS RECEIVER



GROUP REMOTE CONTROL MOTOR 230 V WITH SOMFY WIRELESS RECEIVER



Other circuit diagrams available on request.